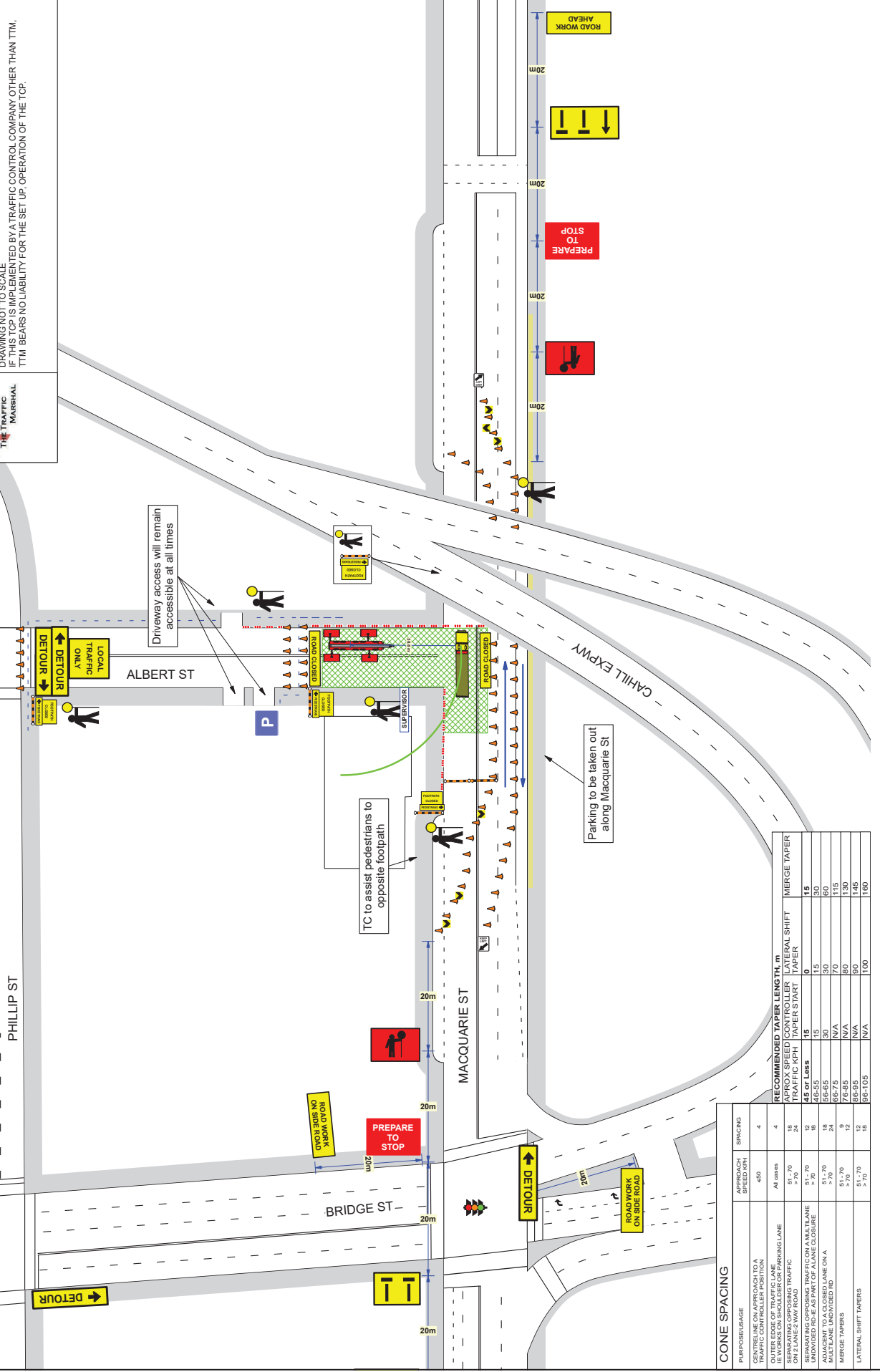


Date: 14/01/2022 Author: Sarah Brennan Project: CONCILL
 Comments:
 Drawn: Sarah Brennan
 PVZ/NIP No:002359403
 Albert St, Sydney _ Temporary road closure

DRAWING NOT TO SCALE
 IF THIS TOP IS IMPLEMENTED BY A TRAFFIC CONTROL COMPANY OTHER THAN TTM,
 TTM BEARS NO LIABILITY FOR THE SET UP, OPERATION OF THE TOP.



- NOTES:
1. SPEED LIMIT 40KPH
 2. CONTAINMENT FENCE ERRECTED AROUND WORKSITE.
 3. DELINEATION CONES PROVIDING 1.2m BUFFER ZONE



RECOMMENDED TAPER LENGTH, m	LATERAL SHIFT TAPER START	MERGE TAPER
APPROX. SPEED CONTROL TAPER START	15	15
APPROX. SPEED CONTROL TAPER END	15	15
APPROX. SPEED CONTROL TAPER END	30	30
APPROX. SPEED CONTROL TAPER END	60	60
APPROX. SPEED CONTROL TAPER END	90	90
APPROX. SPEED CONTROL TAPER END	120	120
APPROX. SPEED CONTROL TAPER END	150	150
APPROX. SPEED CONTROL TAPER END	180	180
APPROX. SPEED CONTROL TAPER END	210	210
APPROX. SPEED CONTROL TAPER END	240	240
APPROX. SPEED CONTROL TAPER END	270	270
APPROX. SPEED CONTROL TAPER END	300	300
APPROX. SPEED CONTROL TAPER END	330	330
APPROX. SPEED CONTROL TAPER END	360	360
APPROX. SPEED CONTROL TAPER END	390	390
APPROX. SPEED CONTROL TAPER END	420	420
APPROX. SPEED CONTROL TAPER END	450	450
APPROX. SPEED CONTROL TAPER END	480	480
APPROX. SPEED CONTROL TAPER END	510	510
APPROX. SPEED CONTROL TAPER END	540	540
APPROX. SPEED CONTROL TAPER END	570	570
APPROX. SPEED CONTROL TAPER END	600	600
APPROX. SPEED CONTROL TAPER END	630	630
APPROX. SPEED CONTROL TAPER END	660	660
APPROX. SPEED CONTROL TAPER END	690	690
APPROX. SPEED CONTROL TAPER END	720	720
APPROX. SPEED CONTROL TAPER END	750	750
APPROX. SPEED CONTROL TAPER END	780	780
APPROX. SPEED CONTROL TAPER END	810	810
APPROX. SPEED CONTROL TAPER END	840	840
APPROX. SPEED CONTROL TAPER END	870	870
APPROX. SPEED CONTROL TAPER END	900	900
APPROX. SPEED CONTROL TAPER END	930	930
APPROX. SPEED CONTROL TAPER END	960	960
APPROX. SPEED CONTROL TAPER END	990	990
APPROX. SPEED CONTROL TAPER END	1020	1020
APPROX. SPEED CONTROL TAPER END	1050	1050
APPROX. SPEED CONTROL TAPER END	1080	1080
APPROX. SPEED CONTROL TAPER END	1110	1110
APPROX. SPEED CONTROL TAPER END	1140	1140
APPROX. SPEED CONTROL TAPER END	1170	1170
APPROX. SPEED CONTROL TAPER END	1200	1200
APPROX. SPEED CONTROL TAPER END	1230	1230
APPROX. SPEED CONTROL TAPER END	1260	1260
APPROX. SPEED CONTROL TAPER END	1290	1290
APPROX. SPEED CONTROL TAPER END	1320	1320
APPROX. SPEED CONTROL TAPER END	1350	1350
APPROX. SPEED CONTROL TAPER END	1380	1380
APPROX. SPEED CONTROL TAPER END	1410	1410
APPROX. SPEED CONTROL TAPER END	1440	1440
APPROX. SPEED CONTROL TAPER END	1470	1470
APPROX. SPEED CONTROL TAPER END	1500	1500

PURPOSE/USAGE	APPROACH SPEED KPH	SPACING
CENTRELINE ON APPROACH TO A TRAFFIC CONTROL POSITION	450	4
SEPARATING OPPOSING TRAFFIC ON CLANES W/IN ROAD	All cases	18
SEPARATING OPPOSING TRAFFIC ON CLANES W/IN ROAD	> 70	24
SEPARATING OPPOSING TRAFFIC ON CLANES W/IN ROAD	> 70	18
SEPARATING OPPOSING TRAFFIC ON CLANES W/IN ROAD	> 70	12
ADJACENT TO A CLOSED LANE ON A MULTILANE UNDIVIDED RD	> 70	12
ADJACENT TO A CLOSED LANE ON A MULTILANE UNDIVIDED RD	> 70	18
ADJACENT TO A CLOSED LANE ON A MULTILANE UNDIVIDED RD	> 70	24
ADJACENT TO A CLOSED LANE ON A MULTILANE UNDIVIDED RD	> 70	30
ADJACENT TO A CLOSED LANE ON A MULTILANE UNDIVIDED RD	> 70	36
ADJACENT TO A CLOSED LANE ON A MULTILANE UNDIVIDED RD	> 70	42
ADJACENT TO A CLOSED LANE ON A MULTILANE UNDIVIDED RD	> 70	48
ADJACENT TO A CLOSED LANE ON A MULTILANE UNDIVIDED RD	> 70	54
ADJACENT TO A CLOSED LANE ON A MULTILANE UNDIVIDED RD	> 70	60
ADJACENT TO A CLOSED LANE ON A MULTILANE UNDIVIDED RD	> 70	66
ADJACENT TO A CLOSED LANE ON A MULTILANE UNDIVIDED RD	> 70	72
ADJACENT TO A CLOSED LANE ON A MULTILANE UNDIVIDED RD	> 70	78
ADJACENT TO A CLOSED LANE ON A MULTILANE UNDIVIDED RD	> 70	84
ADJACENT TO A CLOSED LANE ON A MULTILANE UNDIVIDED RD	> 70	90
ADJACENT TO A CLOSED LANE ON A MULTILANE UNDIVIDED RD	> 70	96
ADJACENT TO A CLOSED LANE ON A MULTILANE UNDIVIDED RD	> 70	102
ADJACENT TO A CLOSED LANE ON A MULTILANE UNDIVIDED RD	> 70	108
ADJACENT TO A CLOSED LANE ON A MULTILANE UNDIVIDED RD	> 70	114
ADJACENT TO A CLOSED LANE ON A MULTILANE UNDIVIDED RD	> 70	120
ADJACENT TO A CLOSED LANE ON A MULTILANE UNDIVIDED RD	> 70	126
ADJACENT TO A CLOSED LANE ON A MULTILANE UNDIVIDED RD	> 70	132
ADJACENT TO A CLOSED LANE ON A MULTILANE UNDIVIDED RD	> 70	138
ADJACENT TO A CLOSED LANE ON A MULTILANE UNDIVIDED RD	> 70	144
ADJACENT TO A CLOSED LANE ON A MULTILANE UNDIVIDED RD	> 70	150